

DATASHEET

## Sage Inventory Advisor

*Reduce excess inventory. Reduce working capital. Minimise stock-outs.*



Sage Inventory Advisor is an affordable cloud solution that helps companies reduce excess inventory and free up working capital while minimising stock-outs and increasing revenue.

It is designed to integrate with Sage systems to provide visibility of inventory levels and investment, produce quality forecasts and optimal replenishment recommendations.

Information is presented in a visual dashboard which displays overall performance and provides an early warning of items needing attention.

Sage Inventory Advisor is easy to use, quick to implement and can be accessed anytime, anywhere via web browser or mobile device.

### Benefits

- Reduce inventory by 10%-25%, reduce working capital and improve cash flow.
- Improve fill rates by 2%-10%, minimise stock-outs and increase sales.
- Significantly reduce the time spent on planning, forecasting and ordering.
- Better inventory visibility, including early warning of items needing attention.
- The right inventory in the right place at the right time, helping you to grow your business.

**“ In the first six months, we saw a 14% increase in inventory availability combined with a 38% increase in sales. Sage Inventory Advisor is a highly valued solution that gives our business a competitive edge.”**

*Steven Cumper, Director and Co-Founder – Medshop Australia (Medical Supplies)*

## User Interface

Easy to use web and mobile interface with contextual information display for clarity.

## Dashboard

Tracks and displays key inventory performance metrics. Provides exception lists identifying top stock-out, potential stock-out, surplus order and excess items. Allows drilldown to item details.

## Inventory Forecasting

Sophisticated forecast engine generates item forecasts incorporating seasonality and trends, with graphical user interface for refinement.

## Inventory Monitoring

Provides early warning of stock-outs, potential stockouts, surplus orders and poorly performing forecasts.

## Classification Matrix

A unique classification matrix that highlights your most important items, so you can focus on the items that make a significant difference in your business.

## Ordering Schedule

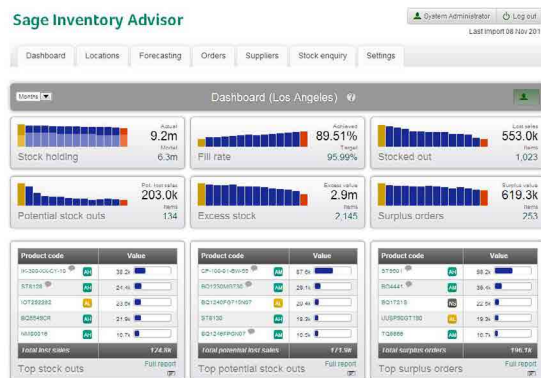
Shows what items to order and when to order them to minimise stock-outs and future excess.

## Order Management

Visibility of existing orders. Exceptions lists that highlight where there is currently too much on order or not enough on order.

## Interactive Reports

Provides critical and detailed information to optimise inventory.



Track performance and identify problem items through interactive dashboards with drill down features.

## Supplier Performance

Monitors and displays actual supplier delivery performance.

## Item Data

Provides a single view of all item information, in one place.

## Fast to Implement and Cost-Effective

A cloud solution, Sage Inventory Advisor can be implemented in just hours.

- Allows anytime, anywhere access.
- Eliminates local server installation.
- Provides worry-free updates and maintenance.
- Delivers rapid deployment and scalability.
- Best-in-class availability level.
- Secure data transfers and secure web interface with banking-strength encryption.

## Natural ERP Integration

Sage Inventory Advisor is compatible with the most popular Sage ERP systems.

- Seamless connection to Sage 300 and Sage X3 systems.
- Eliminates manual data import/ export and dynamically transmits inventory data for analysis, forecasting, replenishment, order and supplier management.
- Complements current Sage Inventory Management and Inventory Control modules to provide dynamic forecasting and planning capabilities.



Utilises the latest forecast technology to generate item forecasts while facilitating manual overrides.

Sage Australia: Telephone: 13 SAGE (Australia) or 0800 904 409 (New Zealand)

Email: [enquiries.pacific@sage.com](mailto:enquiries.pacific@sage.com)

[www.sage.com/au](http://www.sage.com/au)

©2018 The Sage Group plc or its licensors. Sage, Sage logos, Sage product and service names mentioned herein are the trademarks of The Sage Group plc or its licensors. All other trademarks are the property of their respective owners. AU/WF 85106.